



Liberty Series 28-wide Floorplans

Meet Master-Craft: homes for today built on a legacy of quality and value.

Ritz-Craft is excited to include the Master-Craft series of home designs based on our commitment to our company's heritage. Founded in 1954, Ritz-Craft remains a family owned and operated company with a mission to provide quality and affordable housing solutions nationwide. Our daily focus is on the needs of our customers. Ritz-Craft is proud to have earned a reputation in the building industry for providing unmatched value for home builders and their home buyers.

In today's economy, as the price for labor and material continue to rise, it can be difficult for home builders to provide families with a quality home within their budget. Our mantra of "Home Building Made Easy," for the Master-Craft collection challenges us to provide high-value, single and double section manufactured homes and simplified modular designs as our daily mission.

As a result, we are proud to note that the standard construction of Master-Craft collection products will provide many value-added:

- Architectural Shingles
- White Pre-Finished 'Craftsman Style' Molding Package
- Smooth Finished Drywall Ceilings
- European-Style Frameless Cabinets
- 16" O.C. Wall Construction with 2x6 Exterior Walls
- A broad offering of packages, options, and selections
- Quality standards and materials that distinguish Master-Craft from other brands available in this market segment



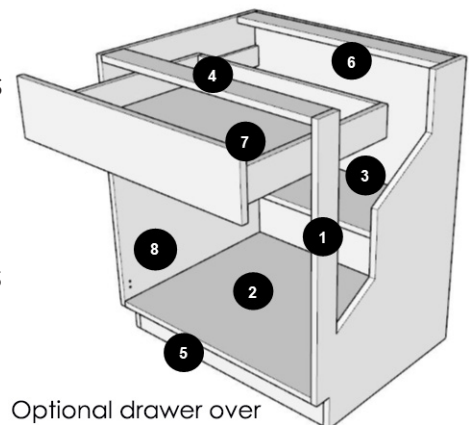
All Master-Craft collection plans will be backed by Ritz-Craft's company-wide quality commitment. We're proud of this new, reimagined line of manufactured housing solutions and we are grateful for the opportunity to deliver you a Master-Craft home.

European Technology Meets American Craftsmanship

Legacy Crafted Cabinets, a member of the Ritz-Craft family of companies has created an entirely new line of cabinetry solutions for the Master-Craft collection of homes. The new Legato Cabinetry boasts an imaginative, frameless cabinet construction, as well as several value-added standards:

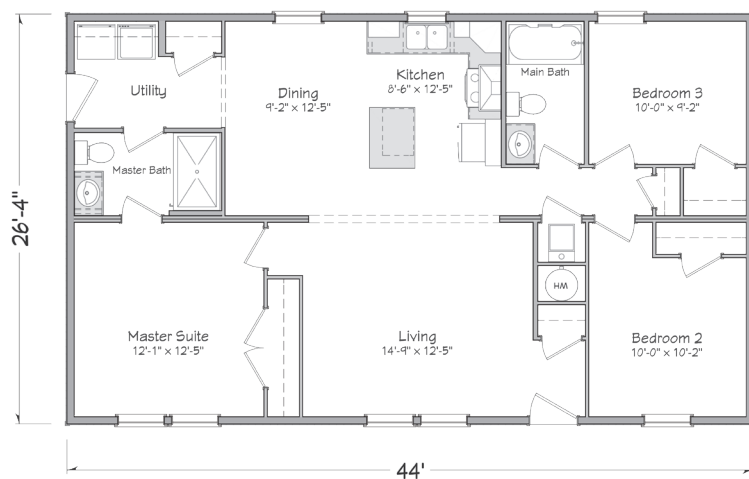
- Full-storage access
- Soft-close and self-close doors and drawers
- Adjustable base and overhead shelves with metal shelf clips
- Three standard colors, including white, gray, and a modern wood grain finish.

The look and functionality of quality cabinetry is at the heart of every home, and Legato Cabinetry by Legacy Crafted Cabinets is prove that it is possible to maintain affordability without sacrificing form or limiting function.



Optional drawer over door construction shown

Legato
CABINETY

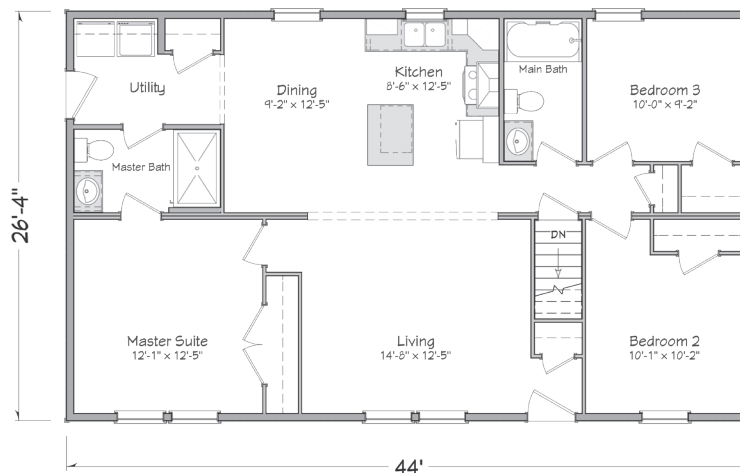


Baldwin 2844

26'-4" x 44'
1,158 sq. ft.
3 bedroom • 2 bath

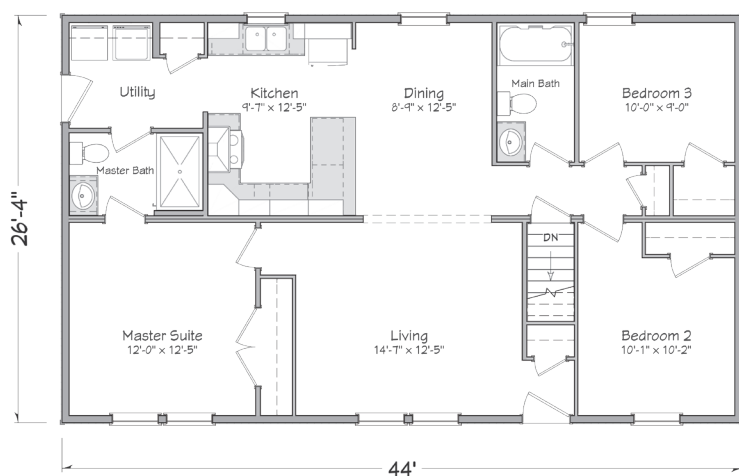
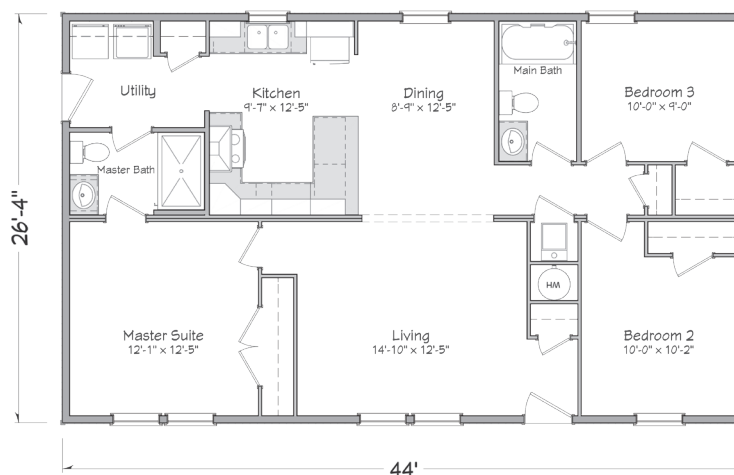
Baldwin 2844B

(Basement Plan)

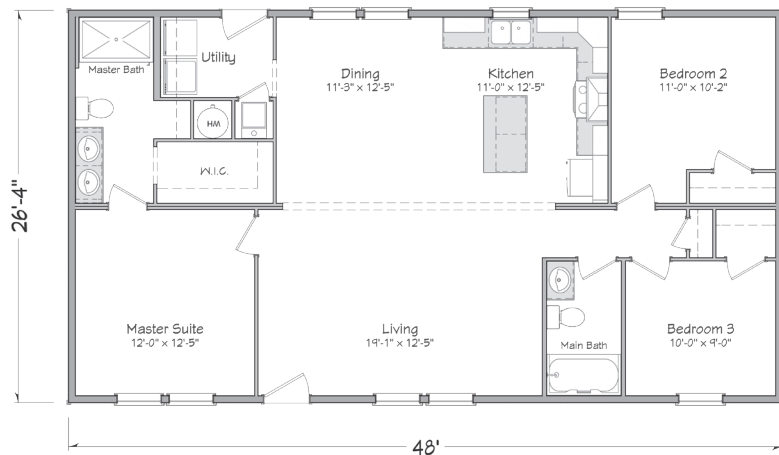


Dickenson 2844

26'-4" x 44'
1,158 sq. ft.
3 bedroom • 2 bath



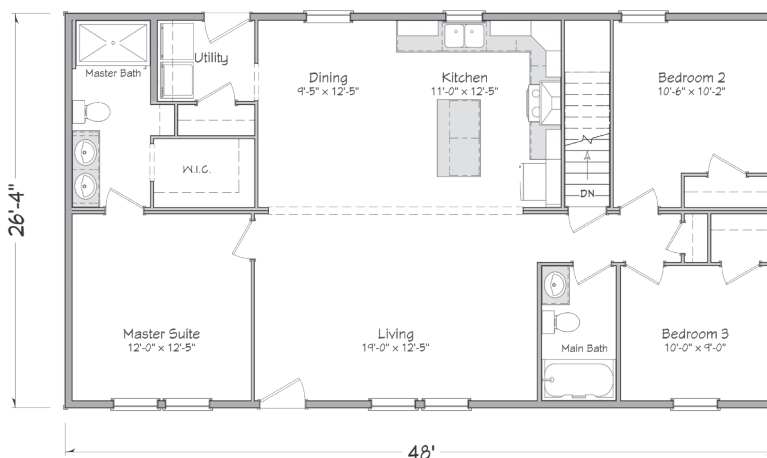
Dickenson 2844B (Basement Plan)



Gorham 2848

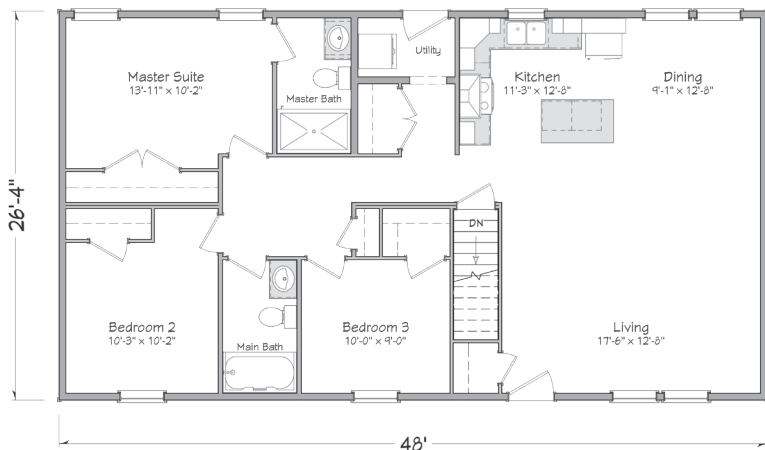
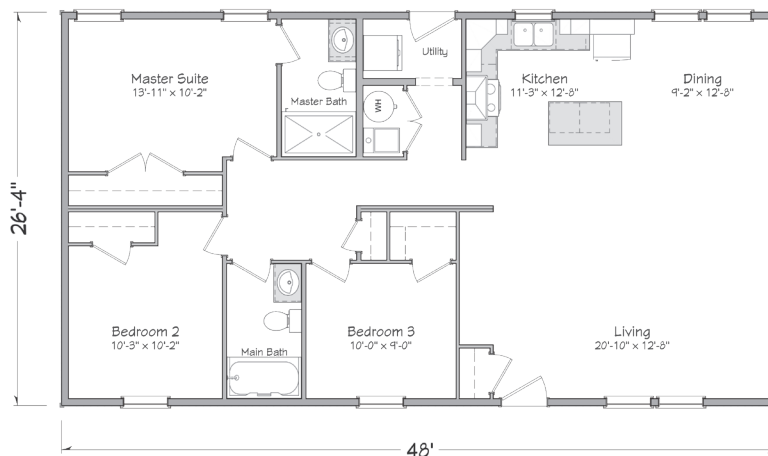
26'-4" x 48'
1,264 sq. ft.
3 bedroom • 2 bath

Gorham 2848B (Basement Plan)

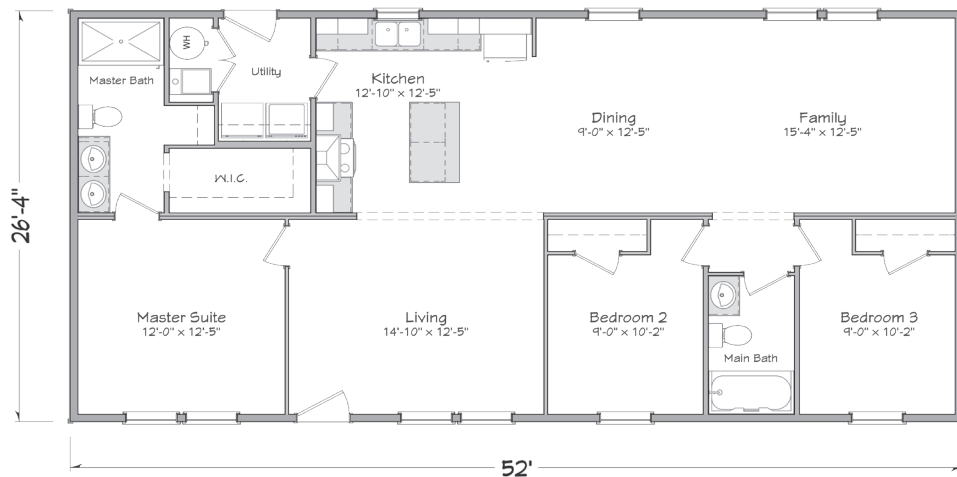


Livingston 2848

26'-4" x 48'
1,264 sq. ft.
3 bedroom • 2 bath



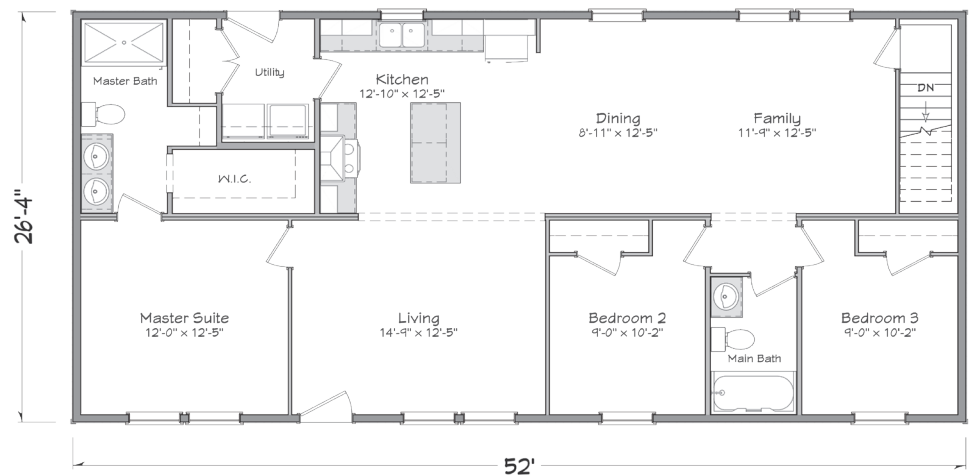
Livingston 2848B (Basement Plan)



Brearley 2852B

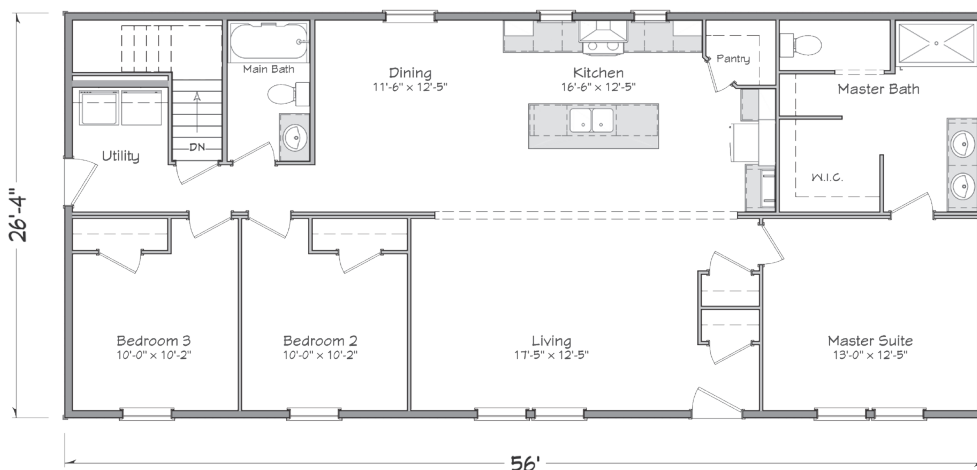
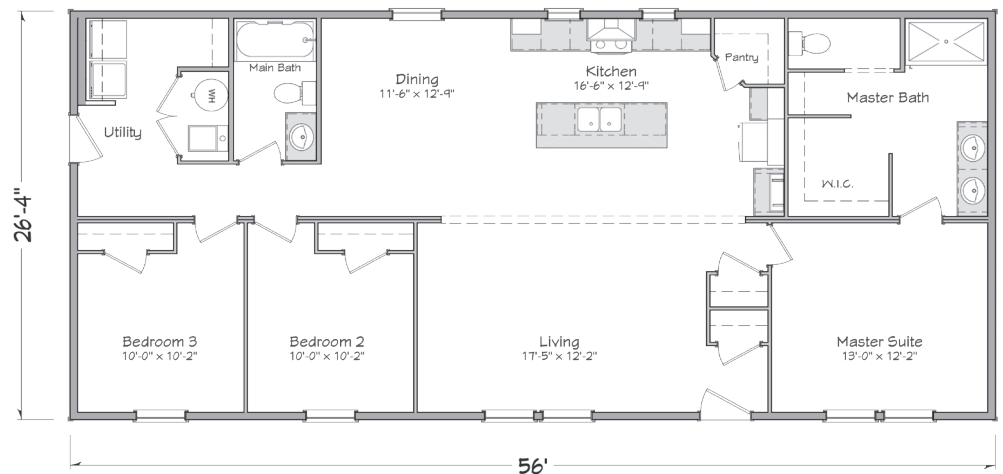
26'-4" x 52'
1,370ww sq. ft.
3 bedroom • 2 bath

Brearley 2852B (Basement Plan)



Langdon 2856

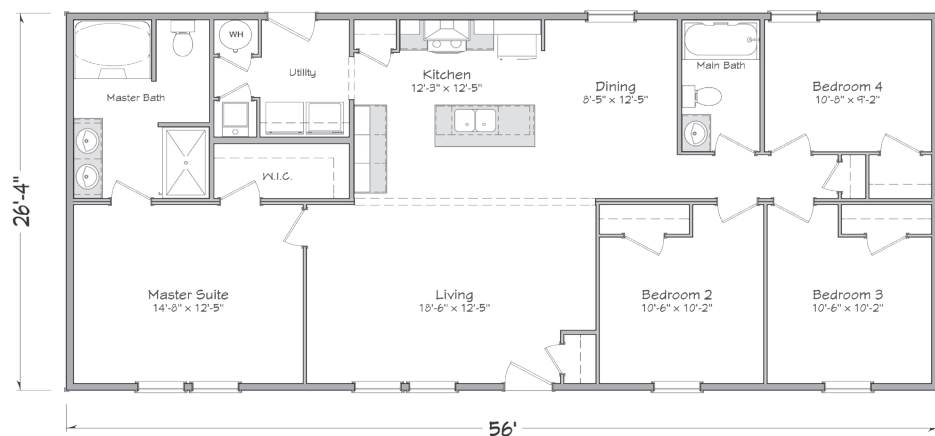
26'-4" x 56'
1,475 sq. ft.
3 bedroom • 2 bath



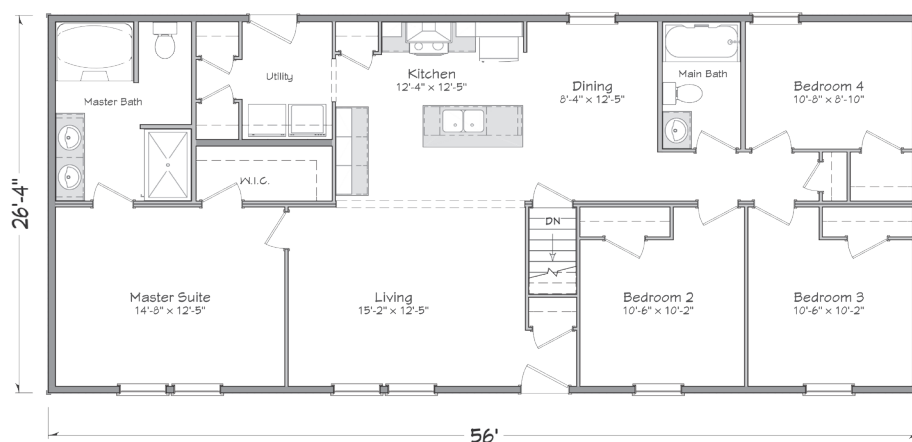
Langdon 2856B (Basement Plan)

Mifflin 2856

26'-4" x 56'
1,475 sq. ft.
4 bedroom • 2 bath

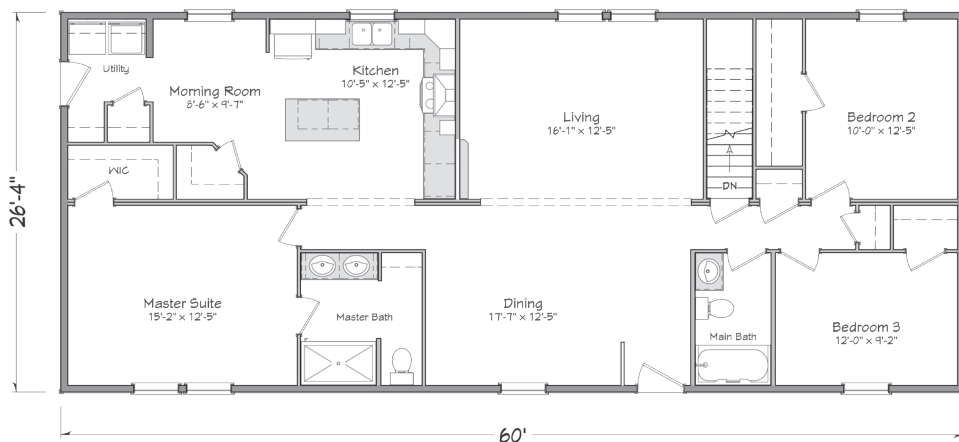
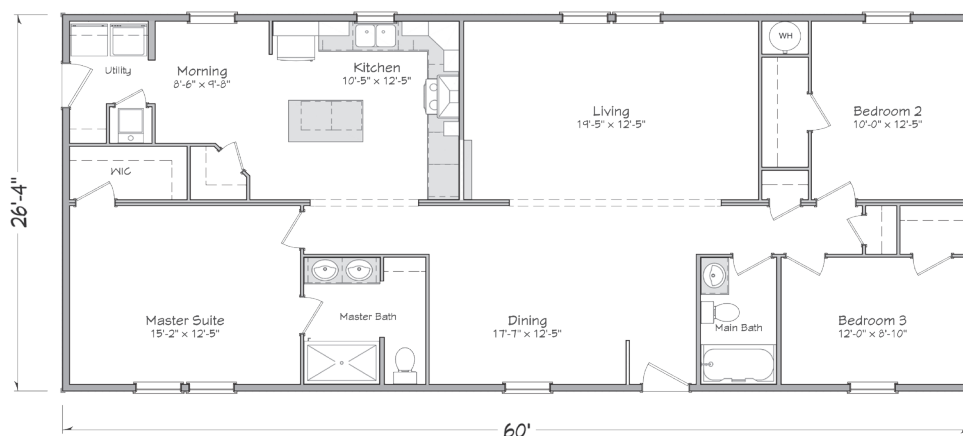


Mifflin 2856B (Basement Plan)

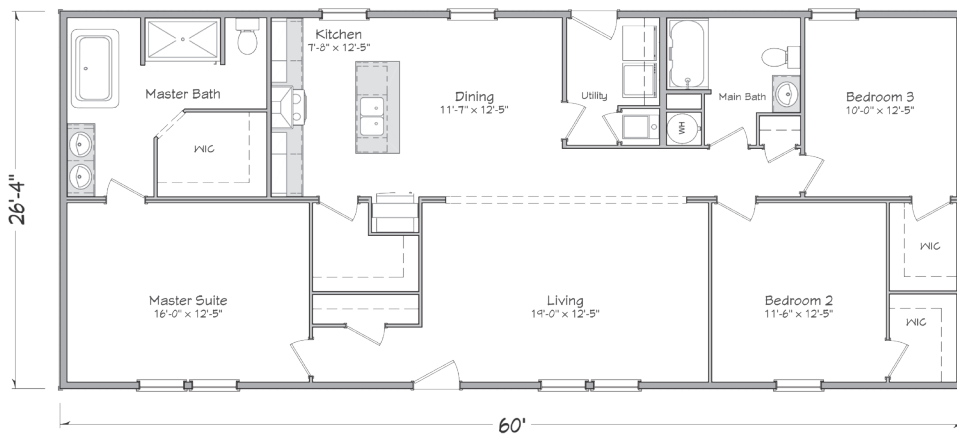


Franklin 2860

26'-4" x 60'
1,580 sq. ft.
3 bedroom • 2 bath



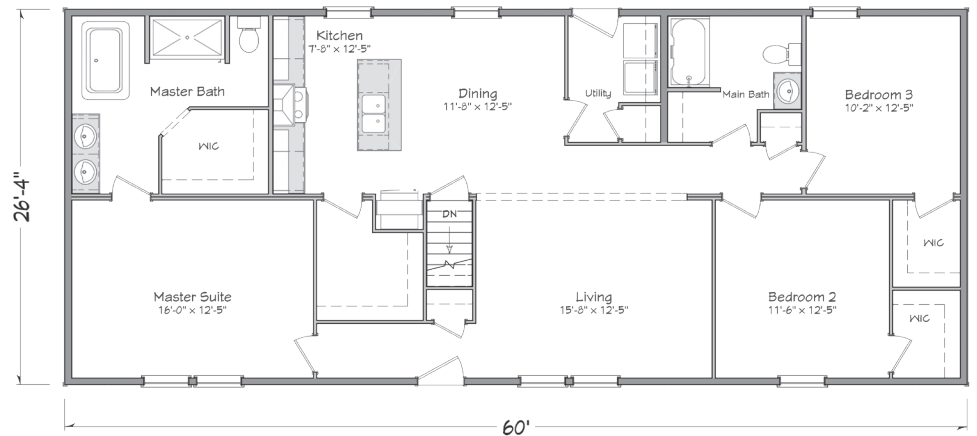
Franklin 2860B (Basement Plan)



Madison 2860

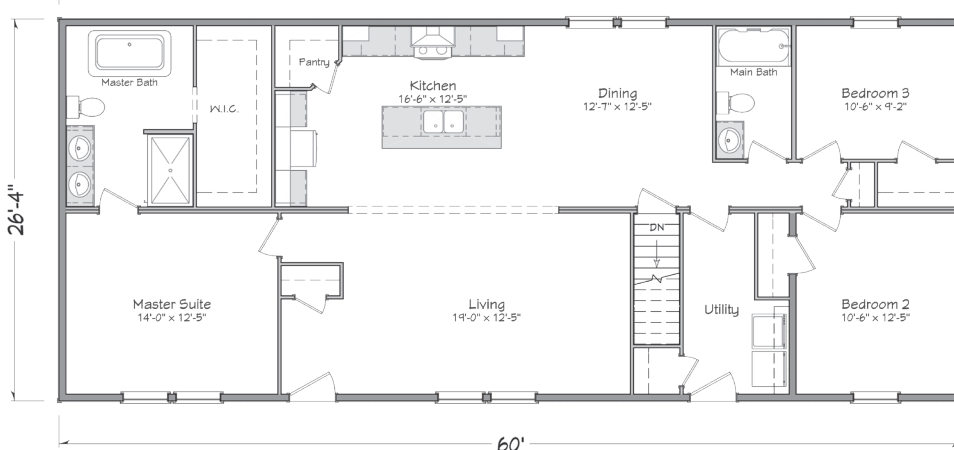
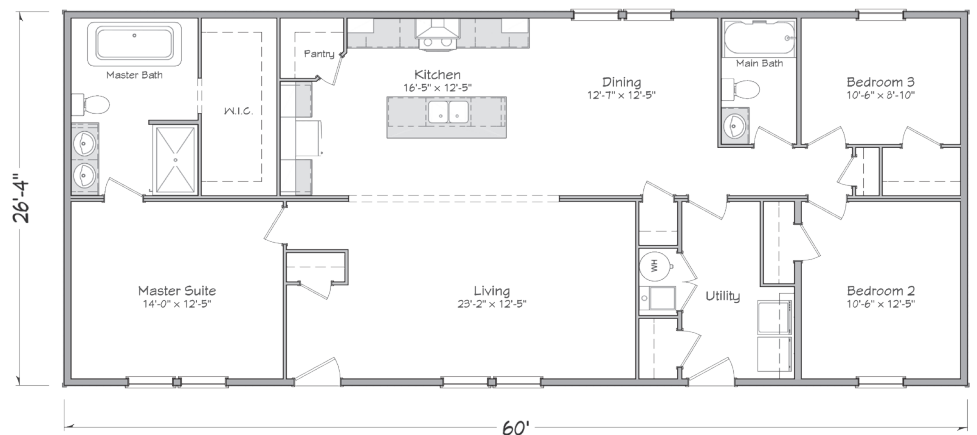
26'-4" x 60'
1,580 sq. ft.
3 bedroom • 2 bath

Madison 2860B (Basement Plan)



Morris 2860

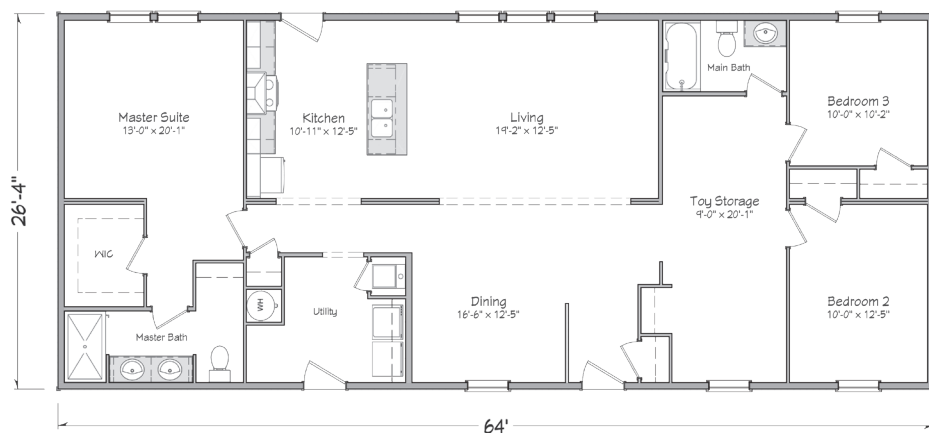
26'-4" x 60'
1,580 sq. ft.
3 bedroom • 2 bath



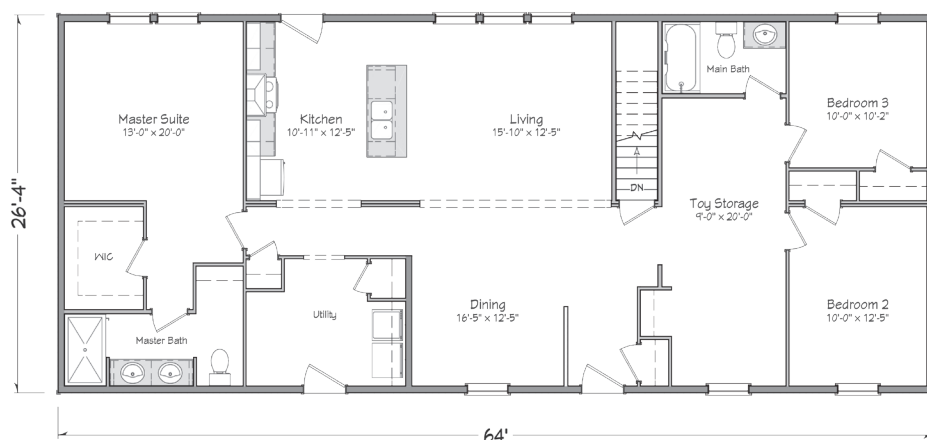
Morris 2860B (Basement Plan)

Rutledge 2864

26'-4" x 64'
1,685 sq. ft.
3 bedroom • 2 bath

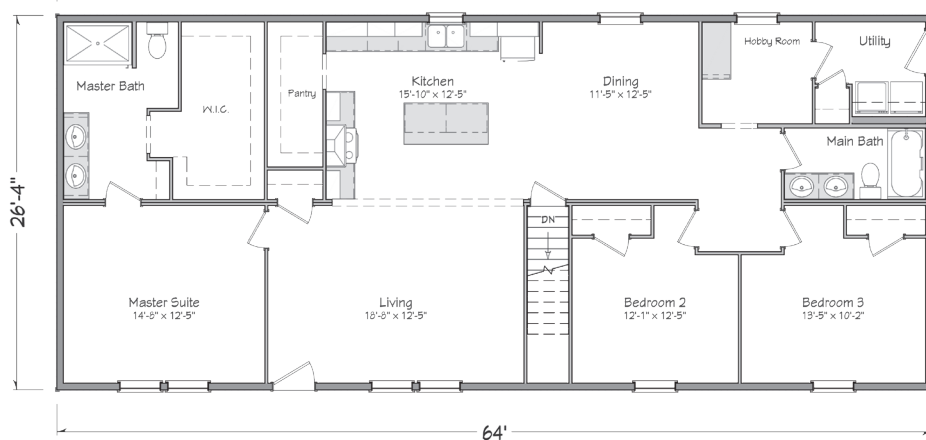
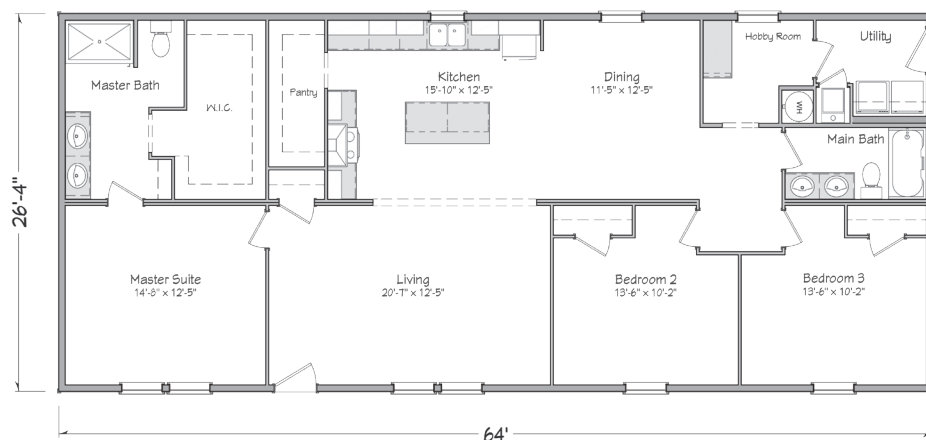


Rutledge 2864B (Basement Plan)

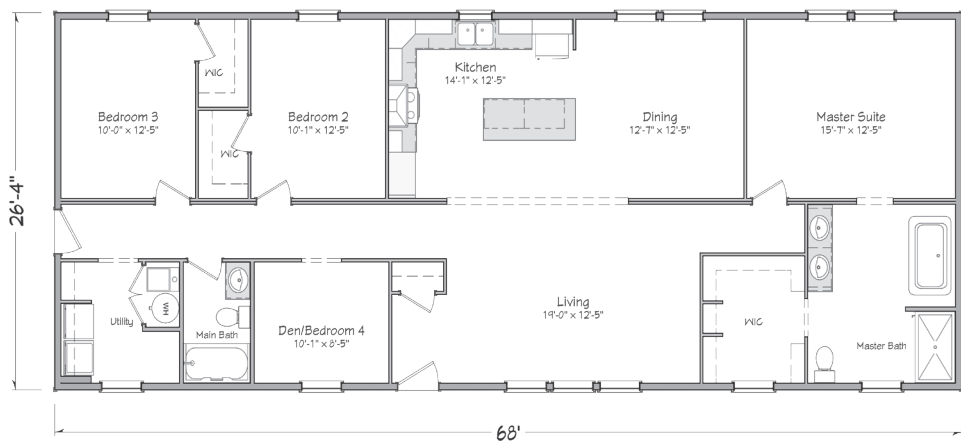


Washington 2864

26'-4" x 64'
1,685 sq. ft.
3 bedroom • 2 bath



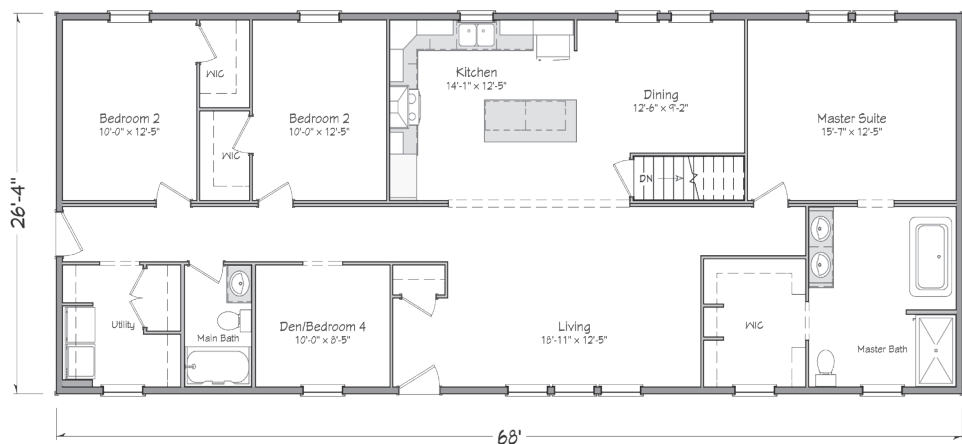
Washington 2864B (Basement Plan)



McHenry 2868

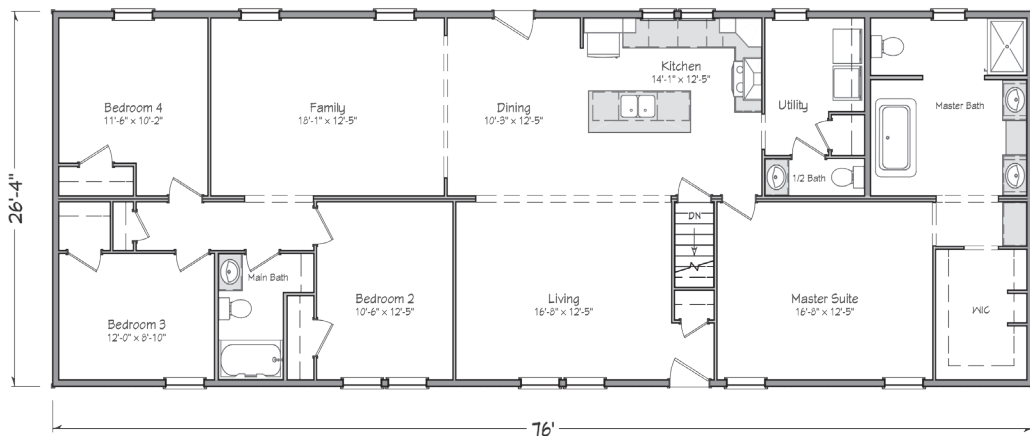
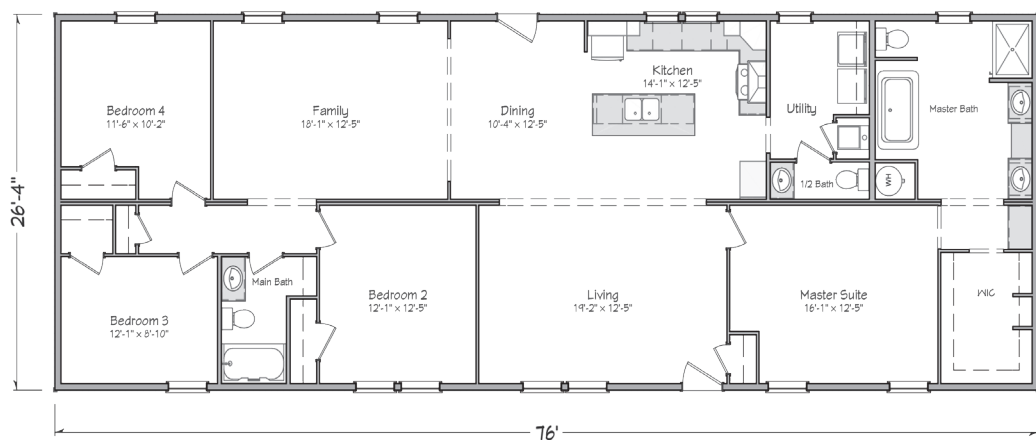
26'-4" x 68'
1,790 sq. ft.
4 bedroom • 2 bath

McHenry 2868B (Basement Plan)



Ingersoll 2876

26'-4" x 76'
2,001 sq. ft.
4 bedroom • 2.5 bath



Ingersoll 2876B (Basement Plan)



Approved homebuilders are independent business entities and are not agents of Master-Craft Corporation or its subsidiaries.

Due to occasional updating of building codes and Master-Craft's continuous product improvement, specifications are subject to change without prior notification. Be sure to request a copy of current specifications from your selected homebuilder.